



**ART
FOR
ALL**

2018 ANNUAL REPORT

THE ELIOT SCHOOL

CLASSES IN CRAFTS & FINE ARTS FOR ALL AGES

ART FOR ALL

CONNECTING PEOPLE TO CRAFT & THE CREATIVE PROCESS

We believe **everyone deserves access to art education** and the opportunity for self-expression. We strive to create a community based on a passion for craftsmanship and a thirst for making and creating whether with hammer, thimble, camera or brush.

Our outstanding faculty, diverse community, welcoming atmosphere and small class size help the Eliot School serve as a hub of art activity and gathering space for all students regardless of age, ethnicity or socioeconomic status.

The Eliot School inspires lifelong learning in craftsmanship and creativity for all.

We build skills and celebrate imagination. We inspire our students to make, create, learn and grow to enrich the quality of life for our diverse communities.



STUDENTS

Over 3,500 students learned from us in 2018:

1,532 students of all ages in our schoolhouse and annex

Over 2,000 children in schools and community centers across Boston

11 young people in Teen Bridge

FACULTY

108 working artisans shared their skills as part of the Eliot School's teaching corps. Many taught year-round, while others led a single workshop or class.

DONORS

325 individuals, businesses and foundations support the Eliot School's work.

LIFELONG LEARNING



IN OUR SCHOOLHOUSE & ANNEX

CLASSES & WORKSHOPS

People of all ages and all walks of life take classes throughout the year in studios at our Eliot Street schoolhouse, Jamaica Plain Annex and satellite facilities. Our menu of classes includes woodworking and furniture, fiber arts, sewing and fashion, visual arts, photography, mixed media and other crafts. We held 260 different, unique workshops and classes in 2018.

SUMMER PROGRAM FOR CHILDREN & TEENS

Seven sessions of week-long art enrichment classes include hands-on learning in woodworking, animation, robotics and Legos, visual art, sewing and fiber arts, photography and inventions.

SUMMER ADULT INTENSIVES

Week-long, full-day classes allow students to practice in-depth specific techniques guided by local, regional and national artisans with a wide reputation and high level of expertise.

COLLABORATIONS

We were honored to partner with three of Boston's great museums (the Museum of Fine Arts Boston, Fuller Craft Museum and the Isabella Stewart Gardner Museum) offering opportunities to create art reflecting current exhibitions. We also offered classes in collaboration with The Makery, Wee The People and the Arnold Arboretum of Harvard University, and we hosted Boston Makers for the first half of 2018 while they sought a more permanent home.

“The Eliot School is my therapy. It’s the place I go for relaxation, learning, laughter and conversation. I look forward to each week.”



THROUGHOUT THE CITY

SCHOOL & COMMUNITY PARTNERSHIPS

We believe all young people have the right to great art education and opportunities. Through our School & Community Partnerships, we bring art instruction to young people where they study, play and live. Sites are located throughout the city, including Dorchester, East Boston, Jamaica Plain, Mattapan, Roslindale, Roxbury and South Boston.

Our programs ignite creativity, enjoyment and accomplishment as children make objects and art by hand.

WEEKLY ART CLASS IN BOSTON SCHOOLS

We provide classes at as many as 15 public and charter schools during the school day. Our curriculum supports literacy and STEM and aligns with Common Core, serving a broad range of learners. Many of our partnerships last for years. With continuity, we build high quality, sequential education for children in grades K-12.

Boston has worked hard to increase art education for all public school students. We are proud to play a part in this effort.

IN THE COMMUNITY, OUTSIDE OF SCHOOL TIME

After school, on weekends and in the summer, our classes take place in libraries, community centers and after-school programs. As the needs of Boston communities evolve, so do our partnerships.

Partners include Boston Centers for Youth & Families, Boston Public Library branches, Boys & Girls Clubs and community centers at low-income housing developments.

Our students reflect the demographics of our partners:

58% live in low-income households

31% speak a first language other than English

20% have special needs

BUILDING COMMUNITY



These programs bridge the worlds of our schoolhouse/annex and our citywide partnerships. They bring young people—and others—in from our schools and communities to our studios, and out from our classrooms into our communities.

TEEN BRIDGE

A select group of dedicated teens from our School & Community Partnerships participate in a year-round program outside of school time, with art instruction, mentorship, job training and summer employment. They develop their skills during Saturday classes, and explore art opportunities, meet with professional artists, visit the MFA, Stonybrook Fine

Arts and other city resources. They learn about themselves as artists and also learn to work together. During the summer, the teens work as Art Teachers' Aides with our younger students and as interns with our Artist in Residence. As teens continue throughout high school, they help recruit, lead and mentor each year's new participants.

"I like Teen Bridge because when you first walk in, you are shy and awkward but then you start growing a bond with the others. It's a fun and positive place to be. Everyone is really welcoming. It's just—positive."





ARTIST IN RESIDENCE

Each year, a Boston-based artist engages across our programs to create public artwork on a resonant theme. Second-year Teen Bridge participants support the artist as interns during an intensive process of collaborative design, art making and community engagement.

In 2018, sculptor Nora Valdez worked with Teen Bridge youth around the theme of Home. Through workshops at local library branches, they invited community members to explore what makes a place home. What makes home safe, comforting? How do we

create a sense of home and claim a place as home? The installation, *Home/Hogar*, is now housed in the Teen Space at the Main Branch of the Boston Public Library at Copley Square.

In 2019, L'Merchie Frazier will work with our teens and in collaboration with children's social justice group Wee The People. *New Urban Monuments: Stand Up Inside Yourself!* will combine fiber art and spoken word, rethinking public monuments to embody values our communities want to remember.

SCHOLARSHIP FUND

Our Scholarship Fund allows students with financial need to experience the joys of craft and creativity without financial worry. This year, both adults and young people enjoyed over 100 classes tuition-free.

Many donations build our Scholarship Fund. Additionally, we are proud to host scholarship funds in honor and in memory of individuals. A named scholarship can be created with a gift of \$10,000 or more.

Current named scholarship funds:

Sonja Schubert Calabi Scholarship for Textile Arts

Lorenzo Calabi Scholarship for Woodworking

Charles Fox Scholarship

Tim Ingles Scholarship

Marilyn Mase Scholarship

Nicole Murray Scholarship



SKILLS & CREATIVITY

PROFESSIONAL DEVELOPMENT

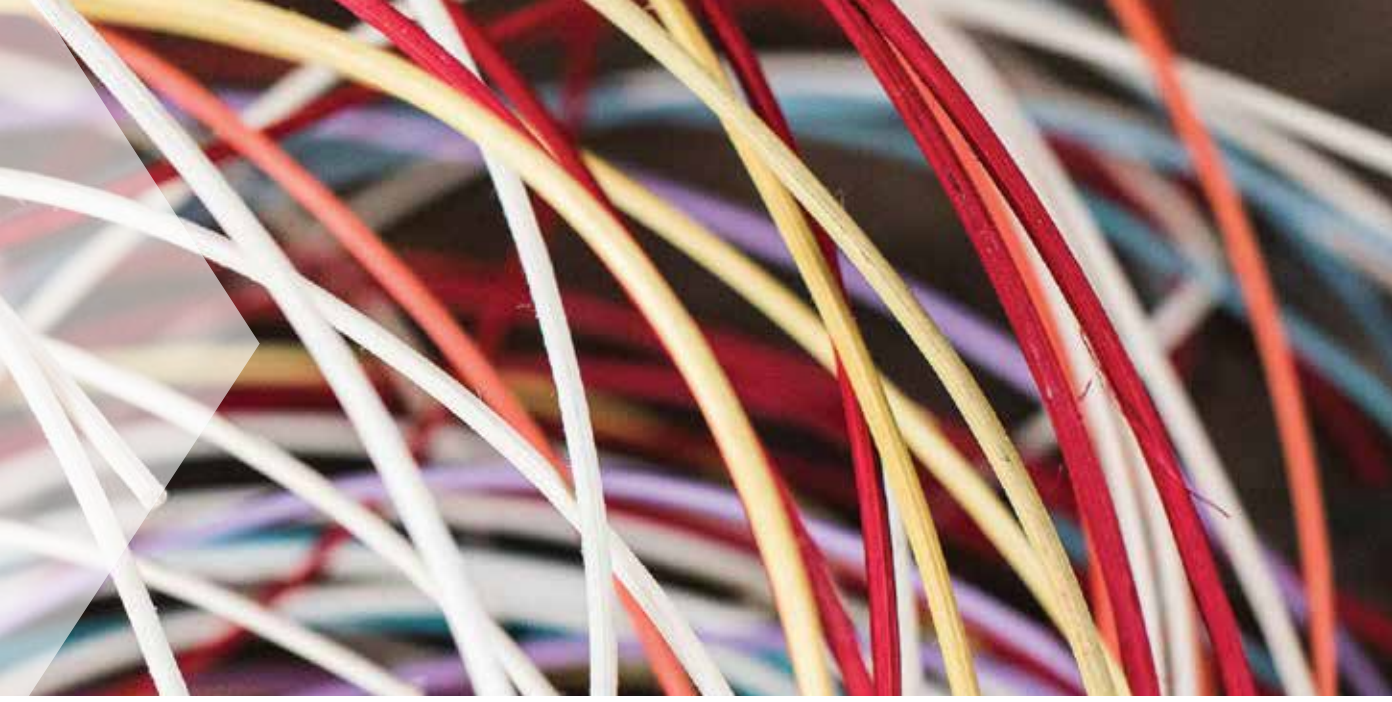
Good teaching depends on skilled, well-supported faculty. We provide our partnership teachers with professional development workshops and support throughout the school year. Our Art Teachers Alliance allows faculty to share curriculum and lesson plans, improve skills, and build relationships among art teachers from the Eliot School, Boston Public Schools, charter schools and community partners.

Our 2018–19 workshops focused on cultural competency and racial justice —or, in the language of Boston Public Schools, culturally and linguistically sustaining practices: recognizing implicit bias, developing critical consciousness around race, and engaging in uncomfortable but important conversations in the classroom.

In 2019-20, we will focus on how teachers can understand and support students' behavioral health.



“The workshop affirmed what I am doing and gave me additional resources. I’m excited about sharing what I learned.”



EVENTS & EXHIBITIONS

Free public events throughout the year extend our reach.

ARTISANS' TALKS

Artisans present their work and engage in conversation as part of Boston Design Week.

EXHIBITIONS AT GALATEA FINE ART

We are pleased to present two exhibitions a year at Galatea Fine Art in the SoWa Art & Design District of Boston's South End. Exhibitions feature our Artists in Residence and selected faculty.

HANDS-ON HOLIDAYS

Children and families gather for free hands-on workshops: creating holiday ornaments, decorating Easter eggs and making tissue-paper lanterns for Jamaica Plain's annual Lantern Parade.

WEE THE PEOPLE

This social justice project inspires children to discover the power of their own voices around difference, equity and justice. Wee The People leads occasional family times and professional development with us.



JAMAICA PLAIN OPEN STUDIOS

An annual celebration of the arts, JP Open Studios gives the public and artists an opportunity to connect. Each year, Eliot School faculty, Teen Bridge and Artist in Residence show work at our schoolhouse in a celebration of our community.

GOING FORWARD

STRATEGIC PLAN

FACILITIES

The Eliot School's future depends on improved and expanded space. We are committed to plan for facilities that better meet the needs of our programs, constituents and staff. We are engaged in a multi-year process to gather information that will help our board make key decisions on building improvements and a capital campaign.

Our schoolhouse, built in 1831, contains a small office and four classrooms: wood shop, upholstery room, sewing room and all-purpose art room. We lease additional space 15 minutes away for administrative offices and our one handicapped-accessible classroom, which also houses our Teen Bridge program.

We need adequate space for classes, administration, storage and project preparation, a loading dock, a welcome desk and a waiting area for parents and students. We also need handicapped accessibility, proper stairways, restrooms, exits and energy efficiency.

In 2018, designLAB architects, working with G2 Collaborative Landscape Architects, completed a feasibility study outlining the space the school needs. Their conceptual design suggests what a renovated and expanded schoolhouse might look like. A new landscape design could open up space at the back of the yard, provide a drive for student and project drop-off, and preserve a path between adjacent streets. The process drew upon more than two years of active input from students, faculty, neighbors and staff.

In 2019, a consulting team will research possible alternatives, exploring what it might look like to expand elsewhere. Expansion or relocation to another site may prove an attractive alternative or supplement to our plans.



PROGRAMS, RESOURCES & INFRASTRUCTURE

Our 2017–20 strategic plan continues to guide our work. Our schoolhouse program will continue to improve in depth and quality, offering an introductory taste of diverse crafts, building pathways to mastery and building its sense of community.

Our Partnership Program will continue to provide high quality hands-on education, offering excellence and affordability to young people throughout Boston.

In the coming years, we will continue to adapt to our changing world, standing firm in our commitment to “Art for All.” We will do our best to build bridges

toward social equity and racial justice, and to challenge barriers that contribute to segregation and unequal access to resources.

As part of this commitment, we will continue to build our board and to support our staff. As we strive to find, train and keep excellent teachers, we will continue to pursue ways to build sustainable, long-term jobs.

A new website, launched in 2019, will streamline our In-House class registration process and help us better show off the school’s full range of programs. A new marketing plan will guide our way forward.

“I’d like to see the Eliot School attract the recognition and resources it needs to carry on the work it does so well. It deserves its reputation as a Boston gem.”



TIME & EXPERTISE

2018 BOARD, ADVISORS & STAFF

BOARD OF TRUSTEES

Melony Swasey, Co-Chair
*Unlimited Sotheby's
International Real Estate*

Jessica Welch, Co-Chair
Lowell, Blake & Associates

Melvin Tutiven, Treasurer
East Boston Savings Bank

Joanna Damp, Secretary

Emily Fannon
Accenture

Edward Forte
Forte Architecture + Design

Karen Haas
Museum of Fine Arts Boston

Aaron Krakow
Krakow & Souris, LLC

Bonnie McBride
*Sportsmen's Tennis &
Enrichment Center (retired)*

Farzana Mohamed

Dana Rashti
AllWays Health Partners

Martha Rizzoli

Eric Warasta,
Moody Lynn & Lieberson, LLC

ADVISORY COUNCIL

Henry Allen
Discount Foundation (retired)

Robert Amelio
Emerson College (retired)

Drew Bagdasarian
DRB Associates

Enerio "Tony" Barros
*Special Assistant to Mayor
Martin J. Walsh*

Lori Smith Britton
*Community Resource
Consulting*

Raquel Cardoso
*Rafael Hernández K-8
School/Boston Public
Schools*

Cornell Coley
Coley Communications

Katie Connolly
Milton Academy

Deirdre Day
Smartbear

James Dorsey
IHC Global Insight

Lee Englert
Steppingstone Foundation

Alex Jacobson
*Jameson & Thompson Picture
Framers*

Fabio Fernandez
*Artist, Educator, Private
Dealer*

Nicole Fernandez

Julio Fuentes

Curtis Henderson
*Boston Neighborhood
Network (retired)*

William Henderson
*Henderson Elementary
School (retired)*

Devin Hill
JP Morgan Securities

Andrea Howard
West End House

Janet Kawada
*Massachusetts College of Art
& Design (retired)*

Paul Levy

James Maguire
Merck Family Fund

George Mallett
Artists for Humanity

Karen McGarity

Nicole Murray

Titilayo Ngwenya
Fuller Craft Museum

Leslie Reid
*Madison Park Development
Corporation*

Michael Reiskind
*Jamaica Plain Neighborhood
Council /Jamaica Pond
Association*

Molly Rubenstein
MIT D-Lab

Antoinette Russell
*Eaton Vance Investment
Counsel*

Mitch Ryerson
Ryerson Design

Jan Spitz
*Norman B. Leventhal Map
Center (retired)*

Sandra Storey
*Jamaica Plain & Mission Hill
Gazettes (retired)*

Robert Tuchmann
*Wilmer Cutler Pickering Hale
and Dorr LP (retired)*

Thomas Welch
Thomas F. Welch Associates

Meredith Olson Wallace
*Brigham Health/Brigham
& Women's Hospital*



BOARD EMERITI

Bob Cunha
 Braulio Felipe
Dept. of Property & Construction Management, City of Boston

Charles Fox
Charles Fox Architect

David Hodes Friedman
Dept. of Architecture, Massachusetts Institute of Technology (emeritus)

Curdina Hill
Clearways to Freedom

John Iappini
Marathon Associates

Carolyn Ingles
Shattuck Hospital (retired)

Ramón Martin
Brigham & Women's Hospital

Marilyn Mase
Wentworth Institute of Technology/Independent Artist

Kevin Moloney
Barron & Stadfeld, PC (retired)

Terry Murray
Eliot Street Capital

Margaret Patterson

Asri Onur Sergici
Hancock Whitney Bank

Terry Power
The Power Company

Joy Silverstein
Fresh Hair Salon

Mary Smoyer
Boston Public Schools (retired)

STAFF

Administration

Abigail Norman
Executive Director

Alicia Chick
Development Officer

Helen Lang
Bookkeeping: Payroll/Audit

Tanya Nixon-Silberg
Team Assistant

School & Community Partnerships

Alican Cronney Moses
Program Director

Verónica Ramírez Martell
Program Coordinator

Taylor Dean
Assistant Program Coordinator

Charlotte Huffman
Teen Arts & Professional Development Coordinator

Julissa Zavala
Teen Arts Specialist

Ian Haines
Team Assistant

In-House Program

Claudia Fiks
Program Director

Dyllan Nguyen
Special Projects/Summer Program Coordinator

Angie Arriaga Millet
Registrar/Office Manager

Julia Cseko
Assistant Registrar

Brooke Scibelli
Special Projects

Facilities

Andrew Riiska
Facilities Coordinator

Jasmanie Gonzalez
Shop Assistant

Tam Willey
Custodian



DONORS & SUPPORTERS

Many thanks to the following organizations and individuals who generously supported the Eliot School from July 2017 through December 2018.

FUNDERS

Anonymous Foundation
Baltimore Community Foundation
916 Foundation Fund
Barr Klarman
Massachusetts Arts Initiative
Boston Cultural Council*
The Boston Foundation
Remmer-Fox Family Foundation
Shawkemo Family Fund
Sands Family Fund
BPS Arts Expansion Fund
at EdVestors**
Cabot Family Charitable Trust
Combined Jewish Philanthropies
of Greater Boston Tzedakah
Fund (Bernard & Sue Pucker)
The Episode Foundation
Fidelity Charitable Gift Fund
Fritze Family Fund
Hoppin Family Fund
Jockers Family Foundation
Joe Kalt & Judy Gans Foundation
Linde Family Foundation
Massachusetts Charitable
Mechanic Association
Massachusetts Cultural Council*
Massachusetts Cultural Council
Cultural Facilities Fund
Robert & Susan Mayer
Charitable Foundation
McCoy Family Fund of Essex
County Community Foundation
MENTOR Charitable Fund
Murray Family Foundation
New England Grassroots
Environment Fund

New World Foundation
September 20th Fund
The Plymouth Rock Foundation
Patricia C. Remmer
Charitable Trust
Martha & Paul Rizzoli Family
Foundation
Schwab Charitable Fund
Tauck Family Foundation
David V.N. Taylor Foundation

CORPORATIONS & BUSINESSES

Artisans, Artists, Architects & Builders

Ace Creative Graphic Design
Artistic Sign & Carving Co.
Barbara Krakow Gallery
Charles Fox Architect
Decorator's Workroom
Jamaica Plain Artists Association
Jameson & Thompson Picture
Framers
Muskat Studios
Non Issue Studio

Woodworking & Sewing Supplies

JP Knit & Stitch
Yumont True-Value Hardware

Food & Drink

Blanchard's Wine & Spirits
Blue Frog Bakery
City Feed & Supply

Fiore's Bakery
JP Licks-Jamaica Plain
Tito's Handmade Vodka
Wegman's
Whole Foods Market

Financial Services

East Boston Savings Bank
Eaton Vance
F.L. Putnam Investment
Management

Real Estate

AJM Real Estate
Arborview Realty
Unlimited Sotheby's International
Realty-Melony Swasey

Other Businesses

Amazon Smile
Arborway Auto Service
Boing! JP's Toy Shop
Boston Duck Tours
Centre Cuts Salon & Day Spa
Fresh Hair Salon
Google: Googlers Give
Hatoff's Gas
Isobar
Jamaica Plain Historical Society
Jamaica Plain Tuesday Club
Jamaica Pond Association
Mann Rodgers & Commonwealth
Cremation & Funeral Services
Murdock Mail
New Leaf Flores
Robiar Massage Therapy
Stanton Insurance Agency
Station 8 Salon
Trapology Boston
Vinndio Salon
West Cork Auto



* Funded in part by the Massachusetts Cultural Council, a state agency, and by the Boston Cultural Council, a municipal agency, which is supported by the Massachusetts Cultural Council.

** Funded in part by Boston Public Schools (BPS) Arts Expansion, a multi-year effort focused on access, equity and quality arts learning for BPS students. The BPS Arts Expansion Fund, managed by EdVestors, is supported by the Barr Foundation, The Boston Foundation, Katie and Paul Buttenwieser, Klarman Family Foundation, Linde Family Foundation, and other foundations and individuals.

DONORS

John Eliot Society (\$3,500 +)

Anonymous (4), Anonymous *in honor of Abigail Norman*, Elizabeth Barringer, Sue & Rob Bushman, Estate of Lorenzo Calabi, Marcella Calabi *in memory of Sonja & Lorenzo Calabi*, Kathy & Bob Cunha, Judith Hoos Fox & Charles Fox, Stavros Socrates Frantzis Revocable Trust, Judy Gans & Joe Kalt *in honor of Alison Croney-Moses*, Farzana Mohamed & Paul Levy, Bonnie McBride *in honor of Abigail Norman*, Nicole & Terry Murray, Abigail Norman, Rebecca Norman, Nina Calabresi & Bob Oldshue, Dana Rashti, Cate & Matthew Rioles, Joy Silverstein, Melony Swasey, Nerine & Eric Warasta

Studio Guild (\$1,500–\$3,499)

Anonymous, Antoinette Russell & Louis Bailey, Jeremiah Casey, Joanna Damp, John-Paul Ferguson, The Episode Foundation, Ellen Remmer & Christopher Fox, Caroline & Ralph Gakenheimer, Elizabeth & Simon Griffiths, Karen Haas & Greg Heins, Mimi & Hylton Jolliffe, Micaela Wilson & Douglas Lemle, Laura & Shibly Malouf, Pam & Stuart Mathews, Lucy & Thaddeus McBride, Maureen & David Moses, Fifi Nguyen, Margaret Norman and Geoff Holton *in honor of Abigail Norman*, Beverly Arsem & Tom O'Malley, Amelie Ratliff *in honor of Bonnie McBride*, Martha & Paul Rizzoli, Beverly Heywood Rogers *in honor of Joe Stanewick*, Mary Smoyer, Michelle Hallee & Gordon Wong

Artisan Guild (\$500–\$1,499)

Anonymous, Tish & Henry Allen, Deborah & David Brooks *in honor of Nicole Murray*, Ginger Russell & Brad Brown, Heather Tauck & Griffin Buell, Nancy Topalian & Daniel Bumagin, Paschal Corrigan, Sarah Delaney, Caitlin & William DeVaul, Marilyn Mase & Rick Dunfey, Lee & Jack Englert *in honor of Nicole Murray*, Andrea & Peter Enzinger, Don Eunson & G. Douglas Evans, Renán Flores, Sarah Freeman *in memory of Sam Sherwood*, Anita Fritze, Suzanne Bertisch & Jason Gordon, Carole Mathieson & John Ippini, Cecilia Joseph, Susan Richey & Thomas Kane, Kymberlee Keckler, Elizabeth Ketudat, Marsha Kaminsky & Aaron Krakow, Barbara & Alvin Krakow, Jessica Welch & James Maguire, State Representative Liz Malia, Stefania & George Mallett, Susan & Robert Mayer, Susan Siebert & Bart Mitchell, Catherine Mosgofian, Cristina Rosa Nelson, Kristen & Michael O'Connor, Nicole & Geoff Parsons, Margaret Patterson, Laura & Robert Peabody, Elizabeth Jordan & Christopher Possinger *in honor of Abigail Norman*, Sue & Bernard Pucker, Arlene Snyder & Paul Rabin, Nancy Routh, Tristan Rushton, Charles Sandler, Ken Sazama, Sanem & Asri Onur Sergici, Andrea Sewall *in honor of Ann M. Macauley*, Joanne Shaughnessy, Nick Siemaska, Jodi Schmidt & Peter Smith

in honor of Eileen Schmidt, Bruce Stedman, Mary & John Tarvin, David V.N. Taylor *in memory of Susie Sargent*, Katherine Chaurette & Martin Thomson, Jan Spitz & Steve Truslow *in honor of Abigail Norman*, Lettie & Melvin Tutiven, Sarah Hall Weigel & Tom Weigel, Elizabeth Wood & Jerry Wheelock *in honor of Charlie Sandler*, Nisha Basu & Ian Whittle, Henry Yager

Good Neighbor Fund (\$100–\$499)

Anonymous (8), Meg & Seth Abramowitz, Anastasia Albinson, Barbara Altman, Mary Ames, Barbara Anatolev, Joanne Anderson *in memory of Tim Ingles*, Judith Anderson, Lewis Baer *in honor of Joy Silverstein*, Jay Balaban, Jennifer Lee & Joseph Bamberg, Chelsea Barnett, Ros & Harris Barron, Michael Bentinck-Smith, Anne Kalt & Jeff Berens, Karen Bergstrand, Laurie Glassman & Carla Bettano, Ann Bevan Hollos, Lisa Bevilaqua, Robert Bienkowski *in memory of Tim Ingles*, Amy Ly & Adam Birnbaum, Yelena & William Blackwell, James & JoAnne McGrail Blakey, Ian Boissonnault, Oliver Bouchier, Helen & Andrew Braun, Susan Briggs, Carol Palmer & Andrew Brilliant, Cheryl & Leonard Brown *in memory of Tim Ingles*, Mary Murphy & James Buggie, Nancy Topalian & Daniel Bumagin, Holly & Daniel Burnes, Linda Burnett, Joanne Zitek & Frank Burns, Paul Callahan, Eric Campbell, Meg Campbell, Carole Capper *in honor of Mildred Broner*, Christine Carlsen, Gloria Carrigg, Janet Deegan & Constance Cervone, Pete Chamberlin, Roberto Chao, Doris Charry-Frantzis, Geoffrey Chasin, Linda Lesyna & Sally Cheek *in honor of Abigail Norman*, Rachel & Samuel Childers, Annie Wong & Wayne Chin, Laura & Stewart Chritton, Frieda & Joseph Cohen *in memory of Tim Ingles*, Kim Comart, BJ Comerford, Roberta D Conant, Kathy Connolly *in memory of Tim Ingles*, MJ Connolly *in memory of Lorenzo Calabi*, Katie Connolly, Dean Conway *in honor of Cindy Conway*, Brian Crete, Julie Crockford *in honor of Jessica Welch*, James W. Currie, Jr., Nancy Brigham Cyr, Victoria Coates & Alec Danz, Debra Darby, Dorothy & Alex Darjean *in memory of Tim Ingles*, Deirdre & Jamie Day, Catherine Amory & Charles DeKnatel, Kenneth Dietz, Olga & Sergey Dolinsky, Darlene Donovan, Alan Drabkin, Dorothy W. Dundas *in memory of Sonja and Lorenzo Calabi*, Joan & William Dunfey, Johanna Dwyer *in memory of Brenda Sweeny*, Martha Fowlkes & Frank Egloff, Susan & William Elsabee, Kathleen Engel, Erica & Dan Esrick, Stephen Evans, Emily Fannon, Sandra & Chet Fenton *in honor of Jim Thompson*, Lynne Adams & George Fifield, Theresa Fitzgerald, Anne Cody & Benjamin Forman, Robert Fox, Catlin Fox, Ann Gabhardt & David Friedman, Mary Fries, Brian Gallagher, Martha Gallagher, Dori & John Galton, Linda Garbus, Carol & Steve Garfield, Kathleen Gaskin-Holland & Ivo Holland, Anne & Sean Gavin, Karen & David Gemmett, Jean Hess & Lorna Gibson, Jeffrey Hugh Giles, Myanna Pontoppidan & Linda Giles *in memory of Tim Ingles*,

Mary & Michael Gimbrone, Anne Giovanoni, Mary Ann Sullivan & Michael Gleason, Joyce & Robert Goggins, Pamela Goodale *in memory of Susan F. Johnson*, Yvette Gooding, Albert Gordon, Katherine Gormley, Sarah & Alfred Gracombe, Lisa Talayco & Bruce Graubart, Myrna Balk & Ramon Greenberg, Eric Greimann *in honor of Abigail Norman*, Christine Grey, Priscilla Yang & Nathaniel Grey, Ernest Haas, Debra Rivkin & Bruce Haggarty *in honor of Abigail Norman*, Gail English & Andrew Haines, Deborah & Eric Hall, Sheila & David Hanson, Amy Hitchcock & Glen Hawkins, Josh Hendrick, Brigitte & Maarten Henkes, Curdina Hill, Mary Ames & Brian Hirschfeld *in honor of Mimi & Hylton Jolliffe*, Yvette & Lawrence Hochberg, Maggie Hoffman, Andrea Howard, A.T. Howe *in memory of Tim Ingles*, George Huff, Alisa & Paul Iantosca, Ana Impellizeri, Carolyn Ingles *in memory of Tim Ingles*, Elizabeth & Anthony Jackson, Dorothy Jacobson, Jennifer Johnston, Viki Bok & Dick Jones, Rosemary Jones, June Kaps, Barrie Keller & Steve Kaufman, Janet & Charles Yoichi Kawada, Arlette & Gus Kayafas, Edward Keane *in memory of Theresa A. Couture*, Thomas Keydel, Donald Kelley, Jo-Ann Kenney *in memory of Tim Ingles*, Koren Christensen & Nancy King, Robert King, Susan Kooperstein, Grigoriy Koytiger, Stanley Kramer, Jean & Jordan Krasnow, Tom Krebs, Robert Sharrett & William Krier, Marianne Gibbons & Ron Kulich, David Lapin, Kate LaPine, Judith Robichaud & Rob Larsen, Amanda & Abbott Lawrence, Sandra LeDuc, Celeste & David Lee, Marie Lee, Rita Lee, Katina Leodas, Susan Levin, Sheryl & David Levy, Mary Lewis, Robert Ditter & Alphonse Litz, Laurie Livingston, Alex Bowers & James Liu, Ann Lloyd *in honor of Charles Fox*, Elena & Ron Loukas, Teresa Doyle & Itai Lurie, Susan MacPherson, Pares Mallis, Laura & Shibly Malouf, Virginia & Keith Marcotte, Mary Ellen Ehrenreich & Steve Marks, Erin & Rob Martin, Pat & Ramón Martin, Heidi Whitman & Bob Mathews, Susan & Robert Mayer, Michele & Chuck McAfee, Abigail McBride *in honor of Bonnie McBride*, Anne McCaffrey, Leslie & Richard McDonough, Patti & Larry McKenna, Peggy McNeil *in memory of Tim Ingles*, Elizabeth Merica, D.A. Mittell, Jr., David Moir, Margaret & Kevin Moloney, Patricia Pirone & Orson Moon, Marilyn Morrissey *in memory of Jim Ryan/in honor of Abigail Norman*, Alison Croney Moses & David Moses, Catherine Mosgofian, Linda Sklar & Dick Moscowwitz, Karen Mueller, Steven Muller, Carolyn Muskat, Janice Rogovin & Leo Newhouse, Electa Sevier & Jos Nicolas, Anne Sasser & Morris Norvin, Cindy Ariás & Josiah Oberholtzer, Susan Orr, Roger Pachter, Vicki & Dan Paret, Marilyn & Kevin Parker, Kelly Knight & Andy Payne, Jay Pereaault *in honor of Prof. Joe Stanewick*, Julie & David Perry *in honor of Nicole Murray*, Carol Becker & Jane Petro, Margaret & Frank Pettorossi, Catherine Phillips, Renee & Joseph Pike *in memory of Tim Ingles*, Carol Pine *in memory of Tim Ingles*, Olwen & David Pitzold, Sandra Pearl Pomeroy, Nan Porter *in honor of Putter Porter*,

Susan Porter *in honor of Abigail Norman*, Croney Powell & Rhys Powell, Laura Raisty, Mary Rauh, Edie Read, J. Kevin Reilly *in memory of January*, Michael Reiskind, Martha Kirk Richardson, Elizabeth & Wilson Rickerson, Wendy Rist, Amy Macdonald & Fran Rivkin, Louise Robbins, Mary Roche *in memory of Tim Ingles*, Tom Rose, Esther & Matthew Roth-Katz, Nancy Routh, David Russell, Steven Sackmann, Marcy & Sean Sacks, Harvey Salgo, Anthony Sammarco *in memory of Herbert & Jane Forsell*, Charles Sandler, Gail Sarno, James Savage, Michael Saver, Steve Scherneck, Sheara & Jeffrey Seigal, Barbara Dworetzky & Christopher Shanahan, Peter Shapiro, Jesse Shaw, Vita Shklovsky, Annie Silverman, Marilyn Snyder & Richard Snyder, Lucille & Richard Spagnuolo, Diane & John Spears, Marilu Swett & Carl Spector, Teresa Spillane, Paul Spinale, James Spriggs, Donna Springs *in memory of Mary Springs*, Sandy & Joseph Stanewick *in honor of Abigail Norman*, Eve Straussman-Pflanzer, Nita Sturiale & Giuseppe Taibi, Maureen Talayco *in honor of Lisa Talayco*, Charlie & Maria Tardanico, Joan & Harold Thomas, Polly Hoppin & Robert Thomas, Patricia Thomas, Bill Thompson, Dinah Shepherd & Nick Thompson, Paul Tomkavage, Naomi & Robert Tuchmann, Christine & Jeffrey Van Doren, Sonya Vaziri, Janet Veasey, John Walker, Debra Wallbridge *in honor of Abigail Norman*, Jane & Paul Walsh, Tracy O'Brien & Michele Waters, Barbara Watkins, Bart Dahlstrom & Richard Webster, Mimi Pichey & Jack Wellman, Kathleen Henry-West & John West *in memory of Tim Ingles*, Ellen Vollmers & Christopher Westphal, Sandy Wheeler, Jerry Wheelock *in memory of Tim Ingles*, Barbara & John Wicker, Kendra & Peter Wilde, Katherine Pharibe Wise, Tara Wohlgemuth, Margaret Woo, Cynthia Johnson & John Wortham, Ginny Zanger, Ellen Zellner, Terry Boutelle & Jim Zigmont

Apprentice (\$1–\$99)

Anonymous (6), Anonymous *in honor of Charles Deknatel*, Anonymous *in honor of Paul Levy*, Anonymous *in honor of Paul Levy and Farzana Mohamed (2)*, Anonymous *in honor and memory of Richard Walsh (2)*, Marie Abe, Ruth Vaughan & Feras Akbik, Lee Alexander, Laura Allen, Ruth Allukian, Nancy Angney, Marygrace & Peter Barber, Elissa Barr, Ingrid Barrett *in memory of Sonja and Lorenzo Calabi*, Thomas Barrett *in memory of Helen B. Barrett*, Gary Battiato, Danika Bayard, Margaret Waters & Thomas Battle, Rhea Becker, Seymour Beckford, Alexandra Smith & Christopher Beeson, Nina Lev & Ronald Beland, Sergio Bellotti *in memory of Tim Ingles*, Warren Benbow *in memory of Tim Ingles*, Ruth Ann Bennett, Elaine Berteletti, Paula Bevacqua, Travis Book, Ifigenia & James Boulogiane, Linda Bova *in memory of Tim Ingles*, Mary Brinton, Alexander Brodsky, Rosemary & Ted Brooks, Chelsea Brown, Laura Soul Brown, Glenda Buell, Elizabeth Burke *in memory of Elizabeth Scannell*,

Bev Burton *in memory of Tim Ingles*, Victoria Cain, Louise Carcione *in memory of Tim Ingles*, Raquel Cardoso, Arno Puskar & Philip Carlino, Christine Carlsen *in memory of Elaine S. Agan*, Tracy Carlson, Susan & Tom Carty, Anne Chaisiwatanasai, Donna & Bruce Chapman *in honor of David & Cristina*, Paula Chasan, Susan & Thomas Cheatham *in honor of Naim Fidanque Mohamed Levy*, Alicia & Jeff Chick, Danica Chipman, Nancy Claussen *in memory of Tim Ingles*, Cornell Coley, Robert Collins, Roberta Schmidlein & James Costillo, Susan & Michael Cranmer, James W. Currie, Jr., Patricia Daley, Ted Daniel *in memory of Tim Ingles*, Heather Dawson, Yvonne & Mack Day *in honor of Deirdre Day*, Brendan Denomme, Susan & Dwayne Desaulniers, Lois & Benjamin DeWinter, William J. DiCicco, Nancy Dick-Atkinson *in memory of Nils Johnson*, Judith Dillman, Betsy Disharoon *in memory of Howard Disharoon*, Thomas Donahue, Darlene Donovan, Patricia & Michael Donovan *in memory of Tim Ingles*, Wendy & James Dorsey, Nicola Drew *in memory of Tim Ingles*, Patti Ryan & Christie Dustman, Jerel Dye, Ellen Dyer, Judith Dzyak, John Earley, Leaf Elhai, Anne Emerson, Sharon Engelhardt, Gayle & Michael Epp, Chris Evans, Kelsie Evans, Christine Dunn & Fabio J. Fernández, Wendy Wolfe Fine, Jane Ashley & Ann Fleche, Anne Cody & Ben Forman, Lindy Forrester, Sandy Madden & Ed Forte, Jennifer Coplon & Bob Frank, Anne & Robert Franklin, Eve Sorum & John Fulton, Clea Simon & Jon Garelick *in memory of Tim Ingles*, Katherine Gasaway, Adam Gibbons, Gene Goldstein, Janice Goodfellow, Jean Goodman, Olivia & Alex Graffeo-Cohen, Mary Louise Amrhein & Gerard Greene, Myrna Greenfield, Christine Grey, Dorothy Gunther, Maya & Giora Hadar, Hope Haff, Jill Hallisy, Kristina Hals, Susan & Bruce Hampton, Marie & Matthew Hardie, Ashley Lazonic Harding, Polly Harold, Owen Hartford, James Healy, Amanda Hegarty, Louise Herman, Mi Herzog, Curdina Hill, Devin Hill, Suzanne Hoffman, Lisa Houck, Helen Hummel, Shirley Hutchins *in memory of David Hutchins*, Alex Jacobson, Anna Jados, Alfred Jeffries, Joseph Judge, Marie M. Jules, Virginia Kapner, Carol Kelley *in memory of Tim Ingles*, Adilia Kennedy, Rita Kenney *in memory of Tim Ingles*, Katherine & Harry Keough, Janice & Robert Kerwin, Patricia Kinsella, Yeesun Kim & Nicholas Kitchen, Cynthia Korhonen, Donna Kray, Elizabeth & David Labbe, Lucy Nims-LaFleche & David LaFleche, Joan Lane, Maria Elena Gonzales & Martine LeBret, Ann Niederkorn & Esther Leidolf, Yair Leviel, Marion Davis & Jeri Levitt *in memory of Tim Ingles*, Roselle Levy, Carolyn Shadid Lewis, Kris Liberman, Ken Lindgren, Aida López, Blyth & Charles Lord, Virginia Lyons de Neufville, Fran Rivkin & Amy Macdonald, Regina MacLeod, Beth & Kevin Mahar, Maureen Maher, Nancy Nevins & John Mahoney, Antonia Makosky, Robin & Richard Maltz, Mandela Residents Cooperative, Virginia & Keith Marcotte, Sundus Mari, Veronica Ramirez Martell, Cristin Martineau, Robin Maxfield, Karen McCormack,

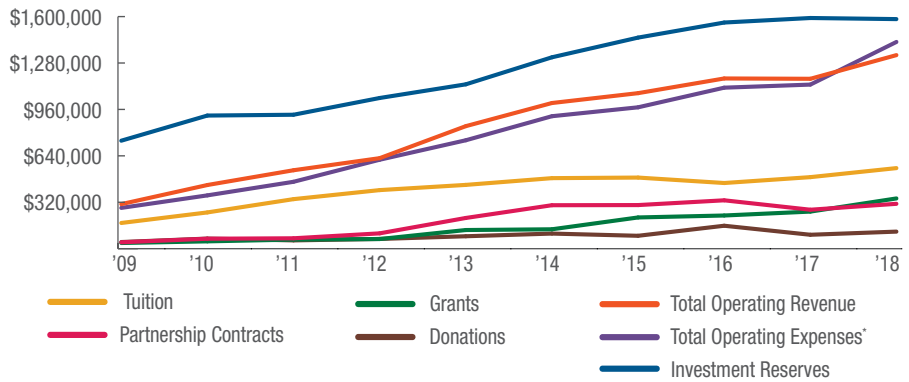
Flora McCoy-Greene *in memory of Tim Ingles*, Mary McCusker, Robert McKee, Victoria McMeeking, Maureen Meloy *in memory of Tim Ingles*, Mary Beth Hardy & Neal Merbaum, Annie Meyer, Jean & James Miller *in honor of Lisa Talayco*, Emily & Joel Mondon *in memory of Tim Ingles*, Martha Moor, Alison Crony-Moses & David Moses, Barbara & Richard Murdock, Linda & John Murphy *in honor of Lisa Talayco*, Katie Li & Kyle Myrick, Dyllan Nguyen, Fifile Nguyen, Titilayo Ngwenya, Tanya Mayadas-Norton & Chuck Norton, Mabel & Albert Oliphant *in honor of Eli Jacob Fixler*, Annie Cole & Gordon Orloff *in memory of Tim Ingles*, Christopher Osgood, Pam Wylie & Kirk Pantos, Rosalie Davis & Scott Payette, Marie Pechet *in memory of Tim Ingles*, Jenna & Vitaliy Petrenko, Carol Becker & Jane Petro, Amy Pett, Vivian Pratt, Martha & Richard Pulley *in honor of Lisa Talayco*, Brian Putnam, Camilo Ramirez, Marty Remsen, Chris & Sheera Rhinehart, Zoe & John Rigas, Kara Rodgers *in honor of Joy Silverstein*, Mary Rogers, Ernesto Romano, Patricia Rooney, Rita Dunipace & David Rosen, Josh Rosen *in memory of Tim Ingles*, Chris McGroddy & Chris Rotti, Carolyn Royce, Carol Russo, Molly Rubenstein, Ann Ryan, Julia Ryan, Amy Nauss & Karen Sabastian, Brooke Scibelli, Peter & Stanley Shapiro, Kimberly Stegmaier & J. Andrew Shelley, Anne McHugh & Howard Shrobe, Rachel Shatil, Pamela Shwartz, Yoko Nakatani & William Silvio, Roberta Apfel & Bennett Simon, Ellen Simons, Ellen Simpson *in honor of Lisa Talayco*, Mary Sine *in memory of Tim Ingles*, Heather Long & Jack Sinnott, Caleb Slotnick, Jaye & Darin Smith *in honor of Khyler & Quinn Smith*, Christine Sonnhalter *in memory of Tim Ingles*, Anna Stabler, Bridget Lynch & James Stark, Madeleine Steczynski, Peter Steiger, Barbara Stier, Sandra Storey, Nancy Stratton, Jin Suk, Mark Sullivan, Nancy Davis Swanson & Robert Swanson, Gerry Tejada, Fabien Tepper, Jennifer Tjia, Sarah & Michael Toce, Eileen Wong & Gregory Tucker, Steve Tully *in memory of Tim Ingles*, Maria Vitagliano, Nadya Volicer, Marie vonKampen, Paul Rogary & Douglas Vooyoys *in memory of Tim Ingles*, Lindsey Wagner, Shirley & Daniel Walsh, Barbara Watkins, Alison Webster, Danielle Weil, Sarah Kate Weiss *in honor of Calvin Weiss*, Emily Richmond Wheeler, Mark Whitlock, Mark Wilen, Matthew Williams, Ann Starnbach & Adam Wise, Laura Wulf, Nikki Kong & John Young, Marcus Yountz, Sebastian Zapata, Sojida Zardodkhon, Reenie Zeff, Linda & Jerrold Zindler

1676 Monthly Giving Society

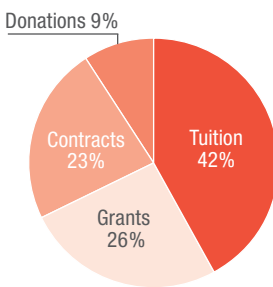
Alicia & Jeff Chick, Jean-Paul Ferguson, Judith Hoos Fox & Charles Fox, Karen Haas & Greg Heins, Alison Crony-Moses & David Moses, Ann Nierderkorn & Ester Leidolf, Tristan Rushton, Joanne Shaughnessy, Melony Swasey, Jessica Welch & James Maguire

FINANCES

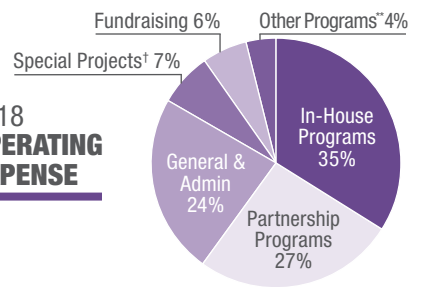
10-YEAR VIEW: FY09–18 ANNUAL OPERATING REVENUE & INVESTMENT RESERVES



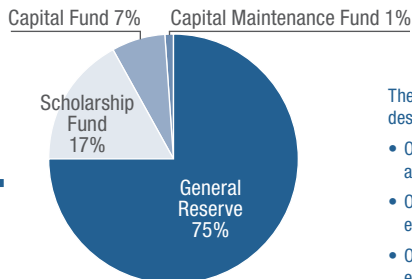
FY18 OPERATING REVENUE



FY18 OPERATING EXPENSE



FY18 RESERVES AS OF 6/30/18



The school's Investment Reserve comprises a board-designated General Reserve and three smaller funds:

- Our Capital Maintenance Fund stores cash for repairs anticipated through our Systems Replacement Plan.
- Our Scholarship Fund contributes 5% of its assets each year to cover tuition for low-income students.
- Our Capital Fund accumulates resources for an eventual capital campaign.

* FY18 operating deficit shows spending on facilities development and planning, paid for through prior years' savings.

** Other Programs: Artist in Residence, Events, Teen Bridge

† Special Projects: Facilities Development & Planning

STATEMENT OF FINANCIAL POSITION FY18

STATEMENT OF ACTIVITIES & CHANGES IN NET ASSETS FY18

ASSETS

| | |
|-------------------------------|-----------|
| Cash | 99,106 |
| Accounts Receivable | 91,475 |
| Investments | 1,559,752 |
| Prepaid Expenses | 7,880 |
| Total Current Assets | 1,758,213 |
| Property & Equipment* | 543,438 |
| Less Accumulated Depreciation | (253,182) |
| Total Property & Equipment | 290,256 |

TOTAL ASSETS **\$2,048,469**

LIABILITIES & NET ASSETS

| | |
|---------------------------|-----------|
| Accounts Payable | 7,121 |
| Sub-lease Deposits | 2,700 |
| Accrued Expenses | 33,587 |
| Total Current Liabilities | 43,408 |
| Unrestricted Net Assets | 1,627,641 |
| Temporarily Restricted | 377,420 |
| Total Net Assets | 2,005,061 |

TOTAL LIABILITIES & NET ASSETS **\$2,048,469**

REVENUE & SUPPORT

| | |
|---------------------------------------|-----------|
| Tuition Fees | 554,281 |
| Contracts | 308,305 |
| Grants | 345,385 |
| Donations | 158,507 |
| Miscellaneous Income | 2,823 |
| Donations In-Kind | 2,240 |
| Operating Revenue | 1,405,091 |
| Net Assets Released from Restrictions | – |

NET REVENUE **\$1,371,541**

EXPENSES

| | |
|------------------------|-----------|
| Programs | 1,067,343 |
| General/Administration | 253,432 |
| Fundraising | 97,642 |

TOTAL EXPENSES **\$1,418,417**

| | |
|----------------------------------|-----------|
| Change in Net Assets, Operations | (46,876) |
| Net Investment Return | 114,019 |
| Change in Net Assets | 67,143 |
| Net Assets, Beginning of Year | 1,937,918 |

NET ASSETS end of year **\$2,005,061**

* Our building and land are fully depreciated and do not appear on our Balance Sheet.
Audited financial statements are available through GuideStar.org



Photographs by: Gretjen Helene Photography, Justin Knight, Michelle Davidson-Schapiro



PO BOX 300351
BOSTON MA 02130
617-524-3313 | info@eliotschool.org | eliotschool.org